



MORWENNA
Shipping Company

Morwenna Shipping Company

- Heavy Lift & OOG Shipments • Towages • Chartering •
- Barges • Pusher & Towing Tugs, AHTS • Technical Management •

www.mwship.com



ABOUT

Morwenna Shipping Company is a shipowner and operator of a maritime and river cargo fleets. The company's core business is the transportation of oversize, Out-of-Gauge (OOG) and heavy-lift cargoes via waterways. The company also specializes in towing services, fleet chartering, and provides logistics solutions related to shipping and towing operations.

The company operates 60+ vessels, including flat-top & RO-RO barges, tugboats, and multipurpose vessels.

The company provides services for transporting all types of oversize and inert cargoes:

- Industrial equipment
- Oilfield equipment
- Offshore platform components
- Wind turbine blades
- Prefabricated plant modules
- Sheet piles, gabions
- Crushed stone and sand-gravel mixtures
- Other oversize structures

The company's fleet is extensively engaged in offshore projects, dredging operations, servicing floating drilling rigs and water treatment platforms, as well as in offshore geological exploration projects.

Morwenna plays an active role in Northern Sea Route infrastructure projects. The company's flat-top barges are used as spacer berths for cargo operations, and tugs are used in the tasks of transporting oversize objects.

The company is certified in accordance with ISO 9001:2015, ISO 14001:2015, and IQNet standards.

By 2025, 700 transport, towing, and marine logistics projects have been completed.

Morwenna Shipping Company is in a constant state of growth and development. New directions are being explored, new offerings are being developed in response to market demands.

Continuous efforts are made to improve the quality of services provided and to ensure compliance with the latest safety requirements.

SERVICES & FLEET OPERATION

Key business activities of the company comprise oversized and project cargo transportation, towing of various types of objects, and provision of a full range of related services.

- 01 — Comprehensive services for transporting OOG and heavy-tonnage cargoes
- 02 — Towing operations of any complexity, including components of drilling platforms and special structures
- 03 — International transportation of oversized cargoes, organization of transit of cargoes and objects via the European part of Russia inland waterways
- 04 — Preparation and provision of specialized ice-class and shallow-draft fleet for projects or charter: tugboats, barges, AHTS vessels
- 05 — Fleet technical management services for third-party shipowners
- 06 — Support & Supply for maritime operations, servicing and provisioning of drilling platforms, offshore sectors
- 07 — Organization and execution of Roll-On/Roll-Off (RO-RO) loading and unloading operations, including at unequipped berths
- 08 — Development of project documentation and related materials, coordination with regulatory authorities

The company's primary operating areas are the seas and inland waterways of the Eurasian continent.

The company's branches are located at fleet bases and in proximity to operational areas.

Operation, Commercial and Chartering Management

📍 Moscow

Technical Management

📍 Moscow

📍 St. Petersburg

Technical Management & Ship Repair

📍 Astrakhan

📍 St. Petersburg

Crewing

📍 Astrakhan

📍 Tyumen

Port & RIWS Agency

📍 Astrakhan

📍 Aktau

📍 Bautino

📍 Kuryk

2022 – start of operations in the Indian Ocean
2025 – first projects launched in the Persian Gulf





The company has extensive experience in transporting petrochemical and gas processing equipment, oil rigs, jack-up drilling platforms and their foundations, as well as supporting supply operations for offshore oil exploration and production projects.

m/v "Sienna" & "Senara" participated in towing a 640,000-tons gravity-based structure (GBS) from Murmansk to Sabetta.

ADVANTAGES

Morwenna is one of the leading Russian shipping companies in terms of the number of owned barge-tug convoys. The company owns & operates more than 60 fleet units.

01 Diverse Specialized Fleet

- The company operates multifunctional tugboats with 3,450 h.p. capacity, built to company's own design in the Netherlands at Thecla Bodewes Shipyards (2017-2019).

These tugs feature elevated wheelhouses for pushing high-profile objects.

- Tugs/AHTS vessels range in power from 2200 h.p. to 3500 h.p. with ice classes
- Soviet-built Tugs/Pusher Tugs types OT-2000, OT-2400, MB, BTO, RT, OTA
- Flat-top barges & RO-RO pontoons with carrying capacity from 2000 to 5500 tons.

The barge designs were specially developed for oversize cargo transportation and RO-RO operations.

Capability for ground loading/unloading operations is available.

02 Customs Carrier License

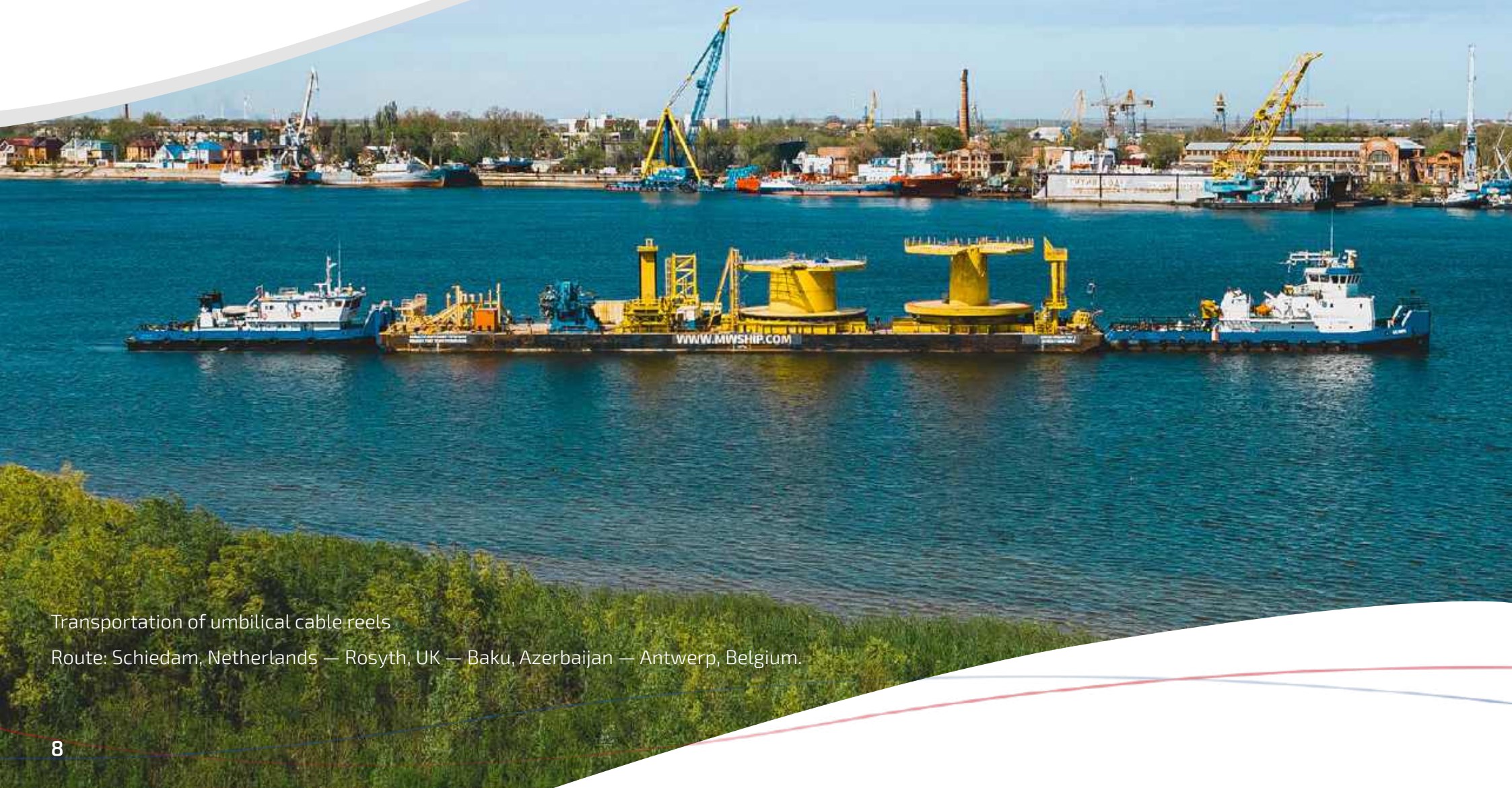
The company's Customs Carrier License enables clients to save on customs duties during transit shipments of oversize and heavy-lift cargoes, as well as during towing operations of non-self-propelled objects declared as transit cargo moving via Inland Waterways.

03 Collaboration with Reliable Partners

Over the years of operation, the company has built strong alliances with businesses working in related sectors.

The company successfully develops its own repair and maintenance facilities through Ship repair & technical base "Kranservice" and "Kompas" Design Bureau.

This integrated approach enables comprehensive client solutions, offering the broadest range of services and flexible contract terms.






Transportation of umbilical cable reels

Route: Schiedam, Netherlands — Rosyth, UK — Baku, Azerbaijan — Antwerp, Belgium.

• MULTIPURPOSE AHTS / PUSHER TUGS • PROJECT KPT2500-1C PUSHER TUG • 3 UNITS

VESSELS: • WENNA • CONWENNA • TREWENNA •

CLASS NOTATIONS::

RINA, C  tug; supply vessel - anchor handling; Unrestricted navigation  AUT-UMS, INWATERSURVEY; MON-SHAFT; **PMS**, Ice Class: IC  Green+ notation for "Trewenna"

PLACE OF BUILT: Netherlands, Kampen, Thecla Bodewes Shipyards

LENGTH_{MAX}: 40,60 m

BREADTH_{MAX}: 13,00 m

DEPTH: 3,50 m

DRAFT: 2,30 m / 2,60 m

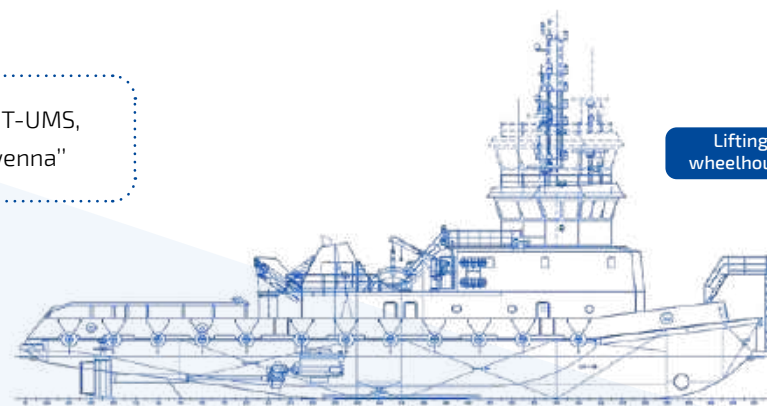
POWER: 3450 h.p. / 2x 1268 kW

DECK LOAD: 3 t/m²

BOLLARD PULL: 39,80 t / 37,27 t / 39,30 t

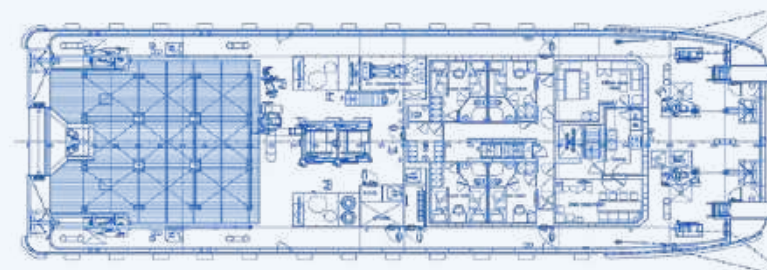
CARGO DECK AREA: 140 m²

PASSENGERS_{MAX}: 20 people (10 — crew / 10 — passengers)



Lifting wheelhouse

SIDE VIEW



TOP VIEW



TREWENNA

YEAR OF BUILT: 2019



CONWENNA

YEAR OF BUILT: 2018



WENNA

YEAR OF BUILT: 2017



ARCTIC

TYPE Tug / AHTS

PROJECT AHT Ice Class IA



CLASS NOTATION:	RS, KM ★ IAAUT1 FF3WS DG(pack) tug, Anchor handling vessel, supply vessel
YEAR OF BUILT:	2012
PLACE OF BUILT:	Turkey, Altynova
LENGTH _{MAX} :	49,60 m
BREADTH _{MAX} :	16,50 m
DEPTH:	4,50 m
DRAFT:	2,90 m / 3,78 m
POWER:	4465 h.p. / 2x 1641 kW
BOLLARD PULL:	46,6 t
CARGO DECK AREA:	313 m ²
DECK LOAD:	5 t/m ²
PASSENGERS _{MAX} :	20 people (12 — crew / 8 — passengers)

IEVOLI ORANGE

TYPE Tug / AHTS

PROJECT AHT Ice Class IA



CLASS NOTATION:	RINA, C ⚓ tug; supply vessel; oil recovery ship; fi-fi ship – 1 – water-spraying; unrestricted navigation IWS, Ice Class: IA
YEAR OF BUILT:	2010
PLACE OF BUILT:	Turkey, Tuzla
LENGTH _{MAX} :	49,98 m
BREADTH _{MAX} :	13,35 m
DEPTH:	4,85 m
DRAFT:	3,25 m
POWER:	4896 h.p. / 2x 1800 kW
BOLLARD PULL:	57 t
CARGO DECK AREA:	240 m ²
DECK LOAD:	5 t/m ²
PASSENGERS _{MAX} :	20 people (12 — crew / 8 — passengers)

SOWENA

TYPE Tug / AHTS
PROJECT 36M Tug Boat



CLASS NOTATION:	RS, KM ★ IC tug
YEAR OF BUILT:	2000
PLACE OF BUILT:	Malaysia, Sibu
LENGTH _{MAX} :	33,25 m
BREADTH _{MAX} :	9,00 m
DEPTH:	4,00 m
DRAFT:	2,85 m / 3,25 m
POWER:	2414 h.p. / 2x 900 kW
BOLLARD PULL:	31 t
CARGO DECK AREA:	102 m ²
DECK LOAD:	5 t/m ²
PASSENGERS _{MAX} :	12 people (11 — crew / 1 — passengers)

SILVER LOWENNA

TYPE Tug / AHTS
PROJECT Damen Shoalbuster 2609



CLASS NOTATION:	RS, KM ★ IC AUT3 tug, Anchor handling vessel
YEAR OF BUILT:	2007
PLACE OF BUILT:	Netherlands, Hardinxveld-Giessendam
LENGTH _{MAX} :	23,36 m
BREADTH _{MAX} :	9,10 m
DEPTH:	3,60 m
DRAFT:	2,50 m / 2,63 m
POWER:	2230 h.p. / 2x 820 kW
BOLLARD PULL:	28 t
CARGO DECK AREA:	60 m ²
DECK LOAD:	5 t/m ²
PASSENGERS _{MAX} :	8 people (7 — crew / 1 — passengers)



Transportation of coke drums from Volgograd to Novokuybyshevsk
on barge "Morwenna-2501".

• **PUSHER TUGS, BTO TYPE** • **PROJECT 81200** • **3 UNITS**

VESSELS:

• **GEROY IGOR ASEEV** • **GEROY ALEKSANDR SAMOFALOV** • **GEROI ZAPOLYARYA** •

CLASS NOTATIONS:

- RCS, ⚡ M-PR 2,5 (ICE 30) A
- RCS, ⚡ M 3,0 (ICE 20)
- RCS, ⚡ O 2,0 (ICE 20) A

PLACE OF BUILT:

USSR, Zvenigovo

LENGTH_{MAX}:

29,40 m / 31,40 m / 29,40 m

BREADTH_{MAX}:

9,60 m / 10,20 m / 9,60 m

DEPTH:

3,70 m

DRAFT:

2,35 m / 2,60 m

POWER:

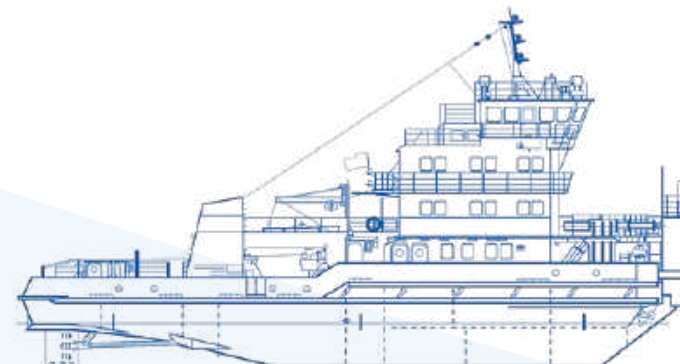
- 1170 h.p. / 860 kW
- 1224 h.p. / 900 kW
- 930 h.p. / 684 kW

BOLLARD PULL:

9,5 t / 6,7 t / 12 t

PASSENGERS_{MAX}:

8 people (7 — crew / 1 — passengers)



SIDE VIEW



TOP VIEW



GEROY IGOR ASEEV



GEROY ALEKSANDR SAMOFALOV



GEROI ZAPOLYARYA



Towage of new-built tanker "Taraz" from Romania to Kazakstan
by "MB-1216" & "Trewenna" tugs.

• **TUGS, MB TYPE** • PROJECT 07521 • **3 UNITS**

VESSELS: • **MB-1216** • **MB-1220** • **KAGUL** •

CLASS NOTATIONS:

- RS, KM ★ Ice2 R2-R5N(4,5) tug
- RINA, C \otimes TUG, Special Navigation, Ice Class: IC

PLACE OF BUILT: USSR, Perm, Shipbuilding Plant "Kama"

LENGTH_{MAX}: 49,60 m

BREADTH_{MAX}: 10,20 m

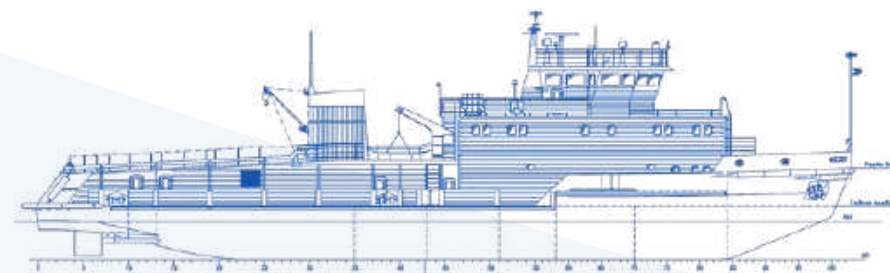
DEPTH: 3,50 m

DRAFT: 2,20 m / 2,46 m

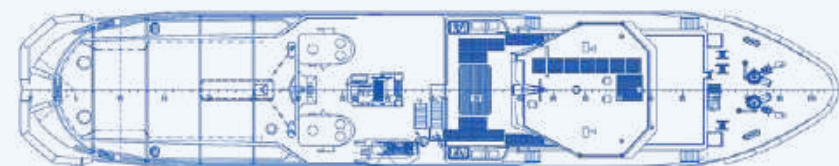
POWER: 1400 h.p. / 2x 515 kW

BOLLARD PULL: 12 t / 15,4 t / 16 t

PASSENGERS_{MAX}: 23 people (13 — crew / 10 — passengers)



SIDE VIEW



TOP VIEW



MB-1216



MB-1220



KAGUL



MUSSON

TYPE RT-600
PROJECT 1741AM



CLASS NOTATION:	RCS, ❄️ O-PR 2,0 (ICE 10) A
PLACE OF BUILT:	Russia, Tyumen
LENGTH _{MAX} :	31,00 m
BREADTH _{MAX} :	8,00 m
DEPTH:	2,70 m
DRAFT:	1,50 m
POWER:	876 h.p. / 2x 320 kW
BOLLARD PULL:	10 t
PASSENGERS _{MAX} :	10 people (9 — crew / 1 — passengers)

OTA-903

TYPE OTA-800
PROJECT 758AM



CLASS NOTATION:	RCS, ❄️ O-PR 2,0 (ICE 20)
PLACE OF BUILT:	USSR, Perm
LENGTH _{MAX} :	40,80 m
BREADTH _{MAX} :	8,60 m
DEPTH:	3,20 m
DRAFT:	1,85 m / 2,01 m
POWER:	800 h.p. / 2x 294 kW
BOLLARD PULL:	10 t
PASSENGERS _{MAX} :	10 people (9 — crew / 1 — passengers)

OT-2080

TYPE OT-2000
PROJECT 428.1



CLASS NOTATION:	RINA, C ❄️ Tug, Special Navigation, Ice Class: IC
PLACE OF BUILT:	Hungary, Budapest
LENGTH _{MAX} :	49,60 m
BREADTH _{MAX} :	11,60 m
DEPTH:	3,30 m
DRAFT:	1,70 m / 2,20 m
POWER:	2000 h.p. / 2x 736 kW
BOLLARD PULL:	27 t
PASSENGERS _{MAX} :	12 people (12 — crew / 0 — passengers)

• **PUSHER TUGS, OT-2400 TYPE** • PROJECT N-3290/3291 • **8 UNITS**

VESSELS:

• **BOGATYR** • **NAVARIN** • **VITYAZ** • **PALLADA** • **IZUMRUD** • **OT-2410** • **OT-2437** • **OT-2452** •

CLASS NOTATIONS:

- RS, KM ★ Ice2 R2-RSN(4,5) tug
- RCS, ✱ M 3,0 (Ice 20) A

PLACE OF BUILT:

Hungary, Budapest, MHD Angyalföldi Gyáregysége

LENGTH_{MAX}:

51,62 m

BREADTH_{MAX}:

12,02 m

DEPTH:

3,30 m

DRAFT:

2,25 m / 2,40 m

POWER:

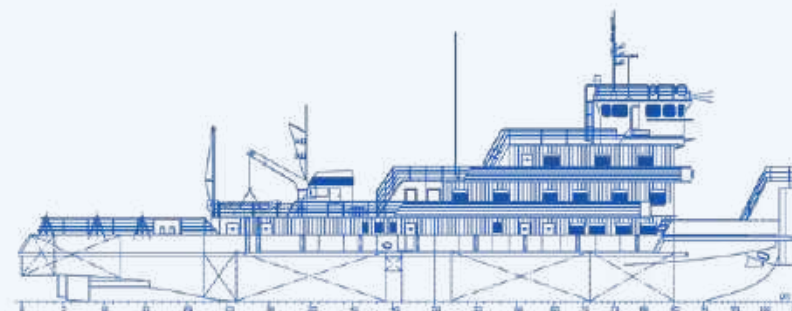
2400 h.p. / 2x 883 kW

BOLLARD PULL:

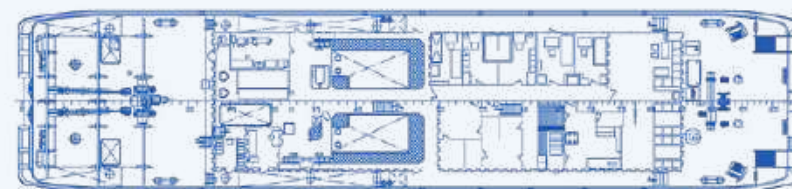
25-29 t

PASSENGERS_{MAX}:

24 people (12 — crew / 12 — passengers)



SIDE VIEW



TOP VIEW



“OT-2400” TUGS



Barges "Silver-3006" and "Silver-3007" are involved in the construction of a river lock in Gorodets.

• RORO-PONTOONS • PROJECT 8916 DAMEN STAN PONTOONS • 11 UNITS

VESSELS:

- SILVER-3001 • SILVER-3002 • SILVER-3003 • SILVER-3004 • SILVER-3005 •
- SILVER-3006 • SILVER-3007 • MORWENNA-3002 • +3 more barges

CLASS NOTATIONS:

RINA, C ✱ HULL, Pontoon, Unrestricted navigation, STRENGTH BOTTOM, INWATERSURVEY, Ice Class: IC

YEARS OF BUILT:

2013–2019

PLACE OF BUILT:

Damen Shipyards

LENGTH_{MAX}:

89,25 m

BREADTH_{MAX}:

16,50 m

DEPTH:

4,50 m

DRAFT:

0,80 m / 3,00 m

DECK LOAD:

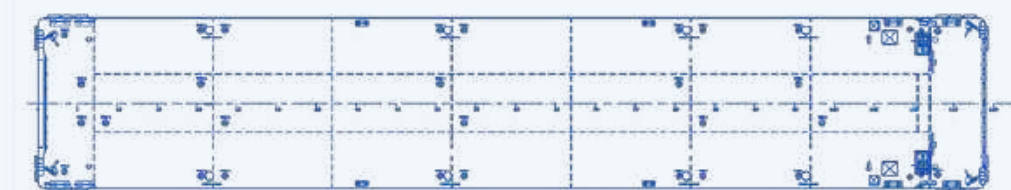
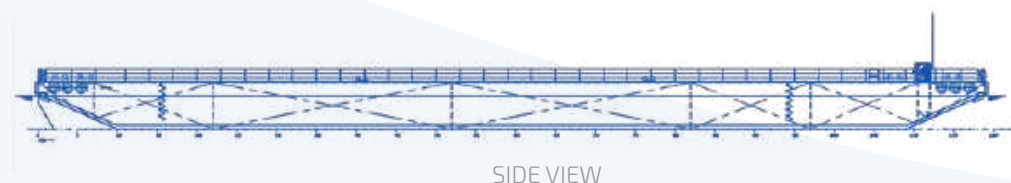
15 t/m²

CARRYING LOAD:

3000 t

CARGO DECK AREA:

- SILVER 3001-3003 – 1050 m² • SILVER 3006-3007 – 1140 m²
- SILVER 3004-3005, MORWENNA-3002 – 1150 m²



8916 DAMEN STAN PONTOON BARGES



Construction of the bridge across the Volga River in Tolyatti as part of the M5 highway route, involving 18 barges and tugboats.

Tugboats: "Geroi Zapolyarya", "Bogatyr", "OT-2410", "OT-2080".

Barges: "Silver-3001", "Silver-3002", "Silver-3003", "Silver-3004", "Silver-3005",
"Silver-3006", "Silver-3007", "Morwenna-2501", "Morwenna-3001",
"Simmar Star", "Simmar Sky", "Morwenna-2001".

• **BARGES/RORO-PONTOONS** • **PROJECT 16801** • **3 UNITS**

VESSELS: • **MORWENNA-1** • **MORWENNA-2** • **MORWENNA-3** •

CLASS NOTATION: RS, K ⚙ Ice1 (hull) R2-RSN (4,5) pontoon for transportation services

PLACE OF BUILT: USSR, Kherson

LENGTH_{MAX}: 85,80 m

BREADTH_{MAX}: 16,48 m

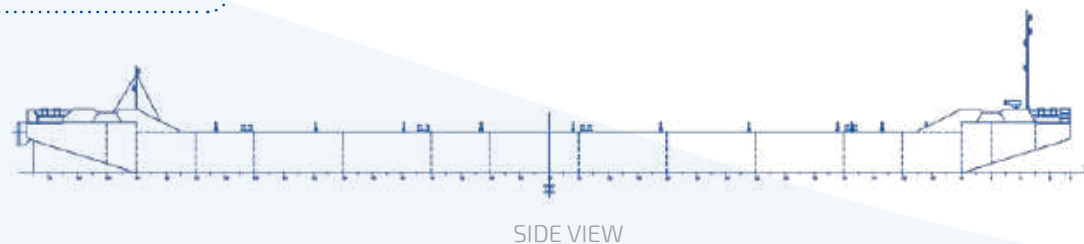
DEPTH: 3,30 m

DRAFT: 0,65 m / 2,25 m

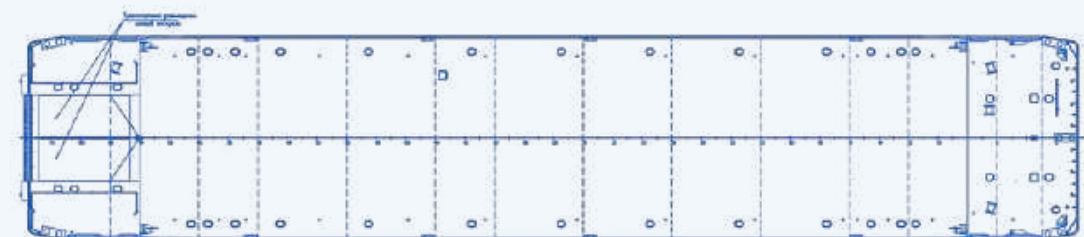
DECK LOAD: 10 t/m²

CARRYING LOAD: 2200 t

CARGO DECK AREA: 1005 m²



SIDE VIEW



TOP VIEW



MORWENNA-1

RORO



MORWENNA-2

FLAT-TOP BARGE



MORWENNA-3

RORO




Transportation of the Liebherr LHM 550 mobile harbor crane (457 t)
inside Novorossiysk port.

• **FLAT-TOP & RORO BARGES** • PROJECT 9516 / SIMMAR • **3 UNITS**

VESSELS:

• **SIMMAR SUN** • **SIMMAR STAR** • **SIMMAR SKY** •

CLASS NOTATION:

RINA, C  Barge-General cargo, Unrestricted navigation, INWATERSURVEY, Ice Class: ICE

YEARS OF BUILT:

2010–2011

PLACE OF BUILT:

Turkey, Istanbul

LENGTH_{MAX}:

95,00 m

BREADTH_{MAX}:

16,50 m

DEPTH:

6,00 m

DRAFT:

0,90 m / 4,80 m

DECK LOAD:

10–20 t/m²

CARRYING LOAD:

5500 t / 4963 t / 3426 t

CARGO DECK AREA:

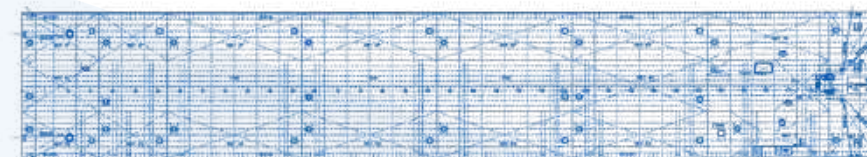
1240 m²

SIMMAR SUN

SIMMAR STAR, SKY



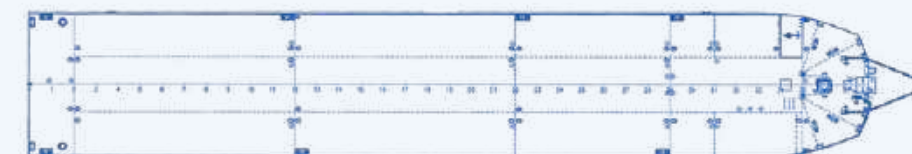
SIDE VIEW



TOP VIEW



SIDE VIEW



TOP VIEW



SIMMAR SUN

RORO



SIMMAR STAR

FLAT-TOP BARGE



SIMMAR SKY

FLAT-TOP BARGE



Transportation of crushed stone on 12 barges of Project 03060
with increased carrying load up to 4550 t by tugboats
"0T-2410", "0T-2437", "0T-2452", "0T-2080", "Bogatyr",
"Geroy Igor Aseev", "Geroy Aleksandr Samofalov", "OTA-903".

• FLAT-TOP BARGES • PROJECT 03060 • 12 UNITS

VESSELS: • MORWENNA-3601 • MORWENNA-3602 • MORWENNA-3603 • MORWENNA-3604 • MORWENNA-3605 • MORWENNA-3606 •
• MORWENNA-3607 • MORWENNA-3608 • MORWENNA-3609 • MORWENNA-3610 • MORWENNA-3611 • MORWENNA-3612 •

CLASS NOTATIONS: RS, K ⚡ 1 R2-RSN / ICE 1 (MORWENNA-3601 — 3603) / [1] R3-RSN ICE 1 (MORWENNA-3610)

YEARS OF BUILT: 2004–2009

PLACE OF BUILT: Russia, Zelenodolsk

LENGTH_{MAX}: 102,30 m

BREADTH_{MAX}: 16,50 m

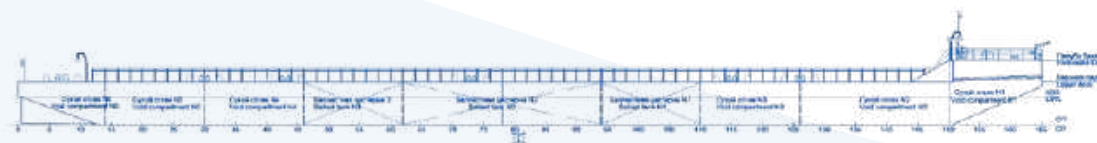
DEPTH: 4,20 m

DRAFT: 2,80 m / 3,00 m

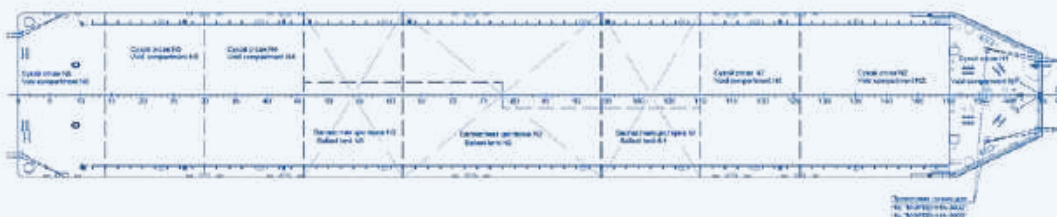
DECK LOAD: 7,50 — 7,70 t/m²

CARRYING LOAD: 3360 t (sea) / 4550 t (river)

CARGO DECK AREA: 1190 m² — 1395 m²



SIDE VIEW



TOP VIEW



PROJECT 03060 BARGES



MORWENNA-2001

TYPE RORO-PONTOON

PROJECT ME2010



CLASS NOTATION: RS, K ⚙ R2-RSN pontoon
for transportation services

YEAR OF BUILT: 2008
PLACE OF BUILT: Russia, Narimanov
LENGTH_{MAX}: 68,27 m
BREADTH_{MAX}: 16,50 m
DEPTH: 3,60 m
DRAFT: 0,60 m / 2,70 m
CARRYING LOAD: 2081 t
CARGO DECK AREA: 720 m² – 830 m²
DECK LOAD: 10 t/m²

MORWENNA-2002

TYPE FLAT-TOP BARGE

PROJECT ME2010



CLASS NOTATION: RS, K ⚙ Ice1 (hull) R2-RSN pontoon
for transportation services

YEAR OF BUILT: 2008
PLACE OF BUILT: Russia, Narimanov
LENGTH_{MAX}: 68,27 m
BREADTH_{MAX}: 16,50 m
DEPTH: 3,60 m
DRAFT: 0,60 m / 2,70 m
CARRYING LOAD: 2040 t
CARGO DECK AREA: 720 m² – 912 m²
DECK LOAD: 7,70 t/m²

MORWENNA-3001

TYPE RORO-PONTOON

PROJECT GRPN.360



CLASS NOTATION: RINA, C, ⚙ HULL, Pontoon

YEAR OF BUILT: 2015
PLACE OF BUILT: Russia, Narimanov
LENGTH_{MAX}: 85,50 m
BREADTH_{MAX}: 16,50 m
DEPTH: 4,50 m
DRAFT: 0,80 m / 3,11 m
CARRYING LOAD: 3000 t
CARGO DECK AREA: 1050 m²
DECK LOAD: 15 t/m²

MORWENNA-2501

TYPE RORO-PONTOON

PROJECT 6516



CLASS NOTATION:	RS, K (★) Ice1 (hull) R2-RSN pontoon
YEAR OF BUILT:	2016
PLACE OF BUILT:	Russia, Kostroma
LENGTH _{MAX} :	65,00 m
BREADTH _{MAX} :	16,50 m
DEPTH:	4,00 m
DRAFT:	0,65 m / 3,15 m
CARRYING LOAD:	2525 t
CARGO DECK AREA:	760 m ²
DECK LOAD:	10 t/m ²

MORWENNA-105

TYPE RORO-PONTOON

PROJECT 5017



CLASS NOTATION:	RS, K ★ PSP Transport Pontoon
YEAR OF BUILT:	1992
PLACE OF BUILT:	Russia, St.-Petersburg
LENGTH _{MAX} :	50,00 m
BREADTH _{MAX} :	17,25 m
DEPTH:	4,00 m
DRAFT:	0,63 m / 3,26 m
CARRYING LOAD:	2050 t
CARGO DECK AREA:	736 m ²
DECK LOAD:	12 t/m ²

CHEMBA

TYPE CHEMICAL BARGE

PROJECT CHEMBA



CLASS NOTATION:	RS, KE ⚡ II R3 Oil/chemical tanker type 3
YEAR OF BUILT:	2017
PLACE OF BUILT:	Netherlands, Kampen
LENGTH _{MAX} :	69,65 m
BREADTH _{MAX} :	16.50 m
DEPTH:	4,00 m
DRAFT:	0,619 m / 2,558 m
CARRYING LOAD:	2097 t / 2200 m ³
DECK LOAD:	10 t/m ²

SUITABLE FOR TRANSPORTING DFO/HFO



TECHNICAL MANAGEMENT

Technical management processes are managed using the AMOS software developed by SpecTec.

The technical management IT system helps monitor fleet technical condition, reduce equipment downtime, and enhance the company's efficient use of material resources.



Morwenna Shipping Company provides commercial and technical management services as well as crewing for third-party companies in both maritime and river fleets.

Technical management services:

- Handling Sale & Purchase (S&P) transactions on behalf of shipowners: pre-purchase vessel inspections, arranging vessel insurance contracts
- Comprehensive monitoring of vessel technical condition, preparing equipment and machinery operability reports, organizing technical inspections and dry-docking surveys
- Organizing planned and routine vessel repairs, including dry-dock repairs
- Operational technical maintenance of vessels
- Supply of necessary spare parts, equipment and provisions for vessels
- Vessel crew selection and crew change organization

Fleet under technical management:



SIENNA (EX. MAERSK ASSERTER)

TYPE AHTS



SENARA (EX. MAERSK ADVANCER)

TYPE AHTS

CLASS NOTATION:	RS KM ★ AUT1 DYNPOS-2 Anchor handling vessel, special purpose ship, supply vessel, tug, IWS
YEAR OF BUILT:	2004
PLACE OF BUILT:	Germany, Stralsund
LENGTH _{MAX} :	90,30 m
BREADTH _{MAX} :	23,00 m
DEPTH:	9,50 m
DRAFT:	7,07 m / 7,80 m
POWER:	23 500 h.p. / 4x 4320 kW
CARGO DECK AREA:	800 m ²
DECK CARGO:	2500 t
BOLLARD PULL _{MAX} :	275 t
PASSENGERS _{MAX} :	70 people (18 — crew / 52 — passengers)



AHTS "Ievoli Orange" tows the "Caspian Explorer" drilling platform to the Abay-1 field.

COMPANY'S HIGHLIGHTS

>600

experienced seafarers ensuring
safe and high-quality fleet
operations



>850

maritime and river logistics
projects in the portfolio



>100

shore-based specialists ensure
uninterrupted fleet operations and
cargo transportation

>8

long-term projects in the field
of oil exploration and Northern
Sea Route development



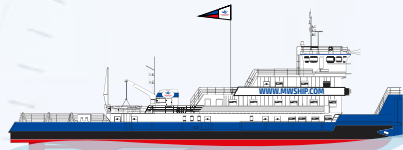
>60

vessels owned by the company.
12 tugs and barges built to own designs



>25

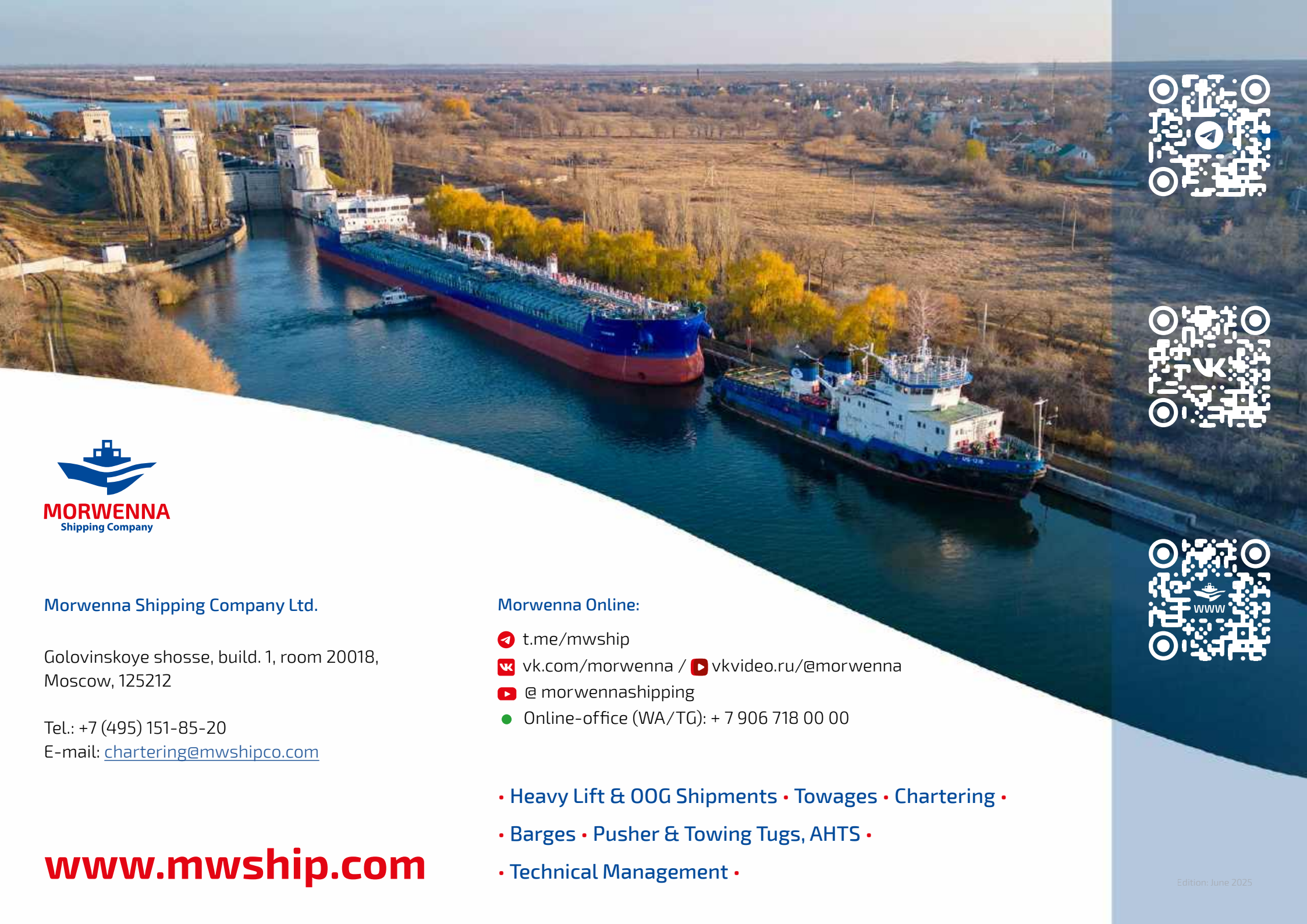
years of experience in
oversize transportation



>5 MLN

tons of oversize cargo have
been transported during
the 5 last years










Morwenna Shipping Company Ltd.

Golovinskoye shosse, build. 1, room 20018,
Moscow, 125212

Tel.: +7 (495) 151-85-20

E-mail: chartering@mwshipco.com

Morwenna Online:

-  t.me/mwship
-  vk.com/morwenna /  vkvideo.ru/@morwenna
-  [@ morwennashipping](https://www.youtube.com/morwennashipping)
-  Online-office (WA/TG): + 7 906 718 00 00

www.mwship.com

- Heavy Lift & OOG Shipments • Towages • Chartering •
- Barges • Pusher & Towing Tugs, AHTS •
- Technical Management •